

## 附件 1 仁化县新增乡镇集中式饮用水水源保护区划分方案（征求意见稿）

水源地名称	水源地类型	保护区类型	水质保护目标	保护区范围		保护区面积(km <sup>2</sup> )
				水域	陆域	
闻韶镇下徐水源地	河流型	一级保护区	II类	取水口下游 100 米至上游全部水域范围	相应一级保护区水域的两岸正常岸线向陆纵深至第一重山山脊线的陆域集雨范围。	0.946
扶溪镇大坑水源地	河流型	一级保护区	II类	取水口下游 100 米至上游全部水域范围	相应一级保护区水域的两岸正常岸线向陆纵深至所在流域分水岭的陆域集雨范围。	1.284
城口镇青石坑水源地	河流型	一级保护区	II类	取水口下游 100 米至上游全部水域范围	相应一级保护区水域的两岸正常岸线向陆纵深至所在流域分水岭的陆域集雨范围。	1.953
红山镇月王坑水源地	河流型	一级保护区	II类	取水口下游 100 米至上游全部水域范围	相应一级保护区水域的两岸正常岸线向陆纵深至第一重山山脊线的陆域集雨范围。	0.757
红山镇石空子水源地	河流型	一级保护区	II类	取水口下游 100 米至上游全部水域范围	相应一级保护区水域的两岸正常岸线向陆纵深至所在流域分水岭的陆域集雨范围。	1.379
大桥镇干坑山水源地	河流型	一级保护区	II类	取水口至上游 1500m 处的水域范围	相应一级保护区水域的两岸正常岸线向陆纵深至所在流域分水岭的陆域集雨范围。	1.936
		二级保护区	III类	一级保护区水域上游边界至上游全部水域范围	相应二级保护区水域的两岸正常岸线向陆纵深至所在流域分水岭的陆域集雨范围。	5.581

## 附件 2 仁化县新增乡镇集中式饮用水水源保护区拐点坐标 (征求意见稿)

表1 仁化县大桥镇干坑山饮用水源地保护区拐点坐标

拐点编号	经度	纬度	X	Y
DQ01Y	113° 47' 53.674" E	24° 54' 0.116" N	38479616	2754996
DQ02Y	113° 47' 52.535" E	24° 54' 1.044" N	38479584	2755024
DQ03Y	113° 47' 24.532" E	24° 53' 52.584" N	38478798	2754765
DQ04Y	113° 47' 21.172" E	24° 53' 49.133" N	38478703	2754659
DQ05Y	113° 47' 17.908" E	24° 53' 47.101" N	38478612	2754597
DQ06Y	113° 47' 18.160" E	24° 53' 33.490" N	38478618	2754178
DQ07Y	113° 47' 25.942" E	24° 53' 28.357" N	38478836	2754020
DQ08Y	113° 47' 36.544" E	24° 53' 37.203" N	38479134	2754291
DQ09Y	113° 47' 41.971" E	24° 53' 45.682" N	38479287	2754552
DQ10Y	113° 47' 52.593" E	24° 53' 49.641" N	38479585	2754673
DQ11Y	113° 47' 53.133" E	24° 53' 55.404" N	38479601	2754851
DQ12Y	113° 47' 56.165" E	24° 53' 58.750" N	38479686	2754953
DQ16Y	113° 47' 33.319" E	24° 53' 33.577" N	38479044	2754180
DQ17Y	113° 47' 28.376" E	24° 53' 28.655" N	38478905	2754029
DQ18Y	113° 47' 35.478" E	24° 53' 16.171" N	38479103	2753644
DQ15Y	113° 47' 43.806" E	24° 53' 34.190" N	38479338	2754198
DQ14Y	113° 47' 48.943" E	24° 53' 32.036" N	38479482	2754132
DQ13Y	113° 47' 57.544" E	24° 53' 33.513" N	38479724	2754177
DQ14Y	113° 47' 39.149" E	24° 53' 17.323" N	38479206	2753679
DQ15Y	113° 47' 47.776" E	24° 53' 20.862" N	38479449	2753788
DQ16Y	113° 47' 54.215" E	24° 53' 23.785" N	38479630	2753878
DQ17Y	113° 47' 59.468" E	24° 53' 29.618" N	38479777	2754057
DQ18Y	113° 47' 59.872" E	24° 53' 31.537" N	38479789	2754116
DQ19Y	113° 48' 47.807" E	24° 54' 9.581" N	38481136	2755285
DQ20Y	113° 48' 39.713" E	24° 54' 8.839" N	38480909	2755262
DQ21Y	113° 48' 37.704" E	24° 54' 7.298" N	38480852	2755215
DQ22Y	113° 48' 38.554" E	24° 53' 59.240" N	38480876	2754967
DQ23Y	113° 48' 43.103" E	24° 53' 55.693" N	38481003	2754858
DQ24Y	113° 48' 47.637" E	24° 53' 49.748" N	38481130	2754674

DQ25Y	113° 48' 53.759" E	24° 53' 41.295" N	38481302	2754414
DQ26Y	113° 49' 8.681" E	24° 53' 36.608" N	38481720	2754269
DQ27Y	113° 49' 13.534" E	24° 53' 47.302" N	38481857	2754598
DQ28Y	113° 49' 15.604" E	24° 53' 51.389" N	38481915	2754724
DQ29Y	113° 49' 16.654" E	24° 53' 55.043" N	38481945	2754836
DQ30Y	113° 49' 18.455" E	24° 54' 0.584" N	38481995	2755007
DQ31Y	113° 49' 17.083" E	24° 54' 10.626" N	38481957	2755316
DQ32Y	113° 49' 13.984" E	24° 54' 20.434" N	38481871	2755618
DQ33Y	113° 49' 6.857" E	24° 54' 21.799" N	38481671	2755660
DQ34Y	113° 48' 58.329" E	24° 54' 28.159" N	38481432	2755856
DQ35Y	113° 48' 55.583" E	24° 54' 16.268" N	38481354	2755490
DQ36	113° 48' 55.743" E	24° 54' 36.111" N	38481360	2756101
DQ37	113° 48' 58.562" E	24° 54' 47.654" N	38481439	2756456
DQ38	113° 49' 1.807" E	24° 54' 56.901" N	38481531	2756740
DQ39	113° 49' 12.351" E	24° 54' 58.583" N	38481827	2756792
DQ40	113° 49' 20.048" E	24° 55' 2.960" N	38482043	2756926
DQ41	113° 49' 27.260" E	24° 55' 1.490" N	38482245	2756880
DQ42	113° 49' 37.081" E	24° 54' 55.070" N	38482520	2756683
DQ43	113° 49' 45.959" E	24° 54' 45.678" N	38482769	2756393
DQ44	113° 49' 54.060" E	24° 54' 44.879" N	38482996	2756368
DQ45	113° 49' 58.850" E	24° 54' 45.907" N	38483131	2756400
DQ46	113° 50' 15.139" E	24° 54' 34.099" N	38483587	2756036
DQ47	113° 50' 9.083" E	24° 54' 25.368" N	38483417	2755768
DQ48	113° 50' 6.966" E	24° 54' 15.418" N	38483357	2755461
DQ49	113° 50' 7.992" E	24° 54' 4.358" N	38483386	2755121
DQ50	113° 50' 9.345" E	24° 54' 0.583" N	38483424	2755005
DQ51	113° 50' 16.578" E	24° 53' 56.763" N	38483627	2754887
DQ52	113° 50' 22.370" E	24° 53' 50.726" N	38483789	2754701
DQ53	113° 50' 14.281" E	24° 53' 38.540" N	38483561	2754326
DQ54	113° 50' 10.427" E	24° 53' 23.768" N	38483453	2753872
DQ55	113° 50' 9.107" E	24° 53' 15.437" N	38483415	2753616
DQ56	113° 50' 5.696" E	24° 53' 2.753" N	38483319	2753226
DQ57	113° 49' 38.122" E	24° 53' 8.028" N	38482545	2753389
DQ58	113° 49' 19.160" E	24° 53' 11.247" N	38482013	2753489

DQ59	113° 49' 14.436" E	24° 53' 14.185" N	38481881	2753579
DQ60	113° 49' 15.421" E	24° 53' 22.699" N	38481909	2753841

**表2 城口镇青石坑饮用水源地保护区拐点坐标**

拐点编号	经度	纬度	X	Y
CK01Y	113° 42' 22.205" E	25° 21' 22.159" N	38470423	2805539
CK02Y	113° 42' 31.513" E	25° 21' 28.058" N	38470684	2805720
CK03Y	113° 42' 40.744" E	25° 21' 30.152" N	38470942	2805784
CK04Y	113° 42' 49.313" E	25° 21' 35.672" N	38471182	2805954
CK05Y	113° 42' 54.687" E	25° 21' 43.589" N	38471333	2806197
CK06Y	113° 43' 4.614" E	25° 21' 43.205" N	38471610	2806185
CK07Y	113° 43' 13.690" E	25° 21' 34.724" N	38471863	2805923
CK08Y	113° 43' 15.467" E	25° 21' 24.917" N	38471913	2805621
CK09Y	113° 43' 22.458" E	25° 21' 18.146" N	38472108	2805412
CK10Y	113° 43' 18.132" E	25° 21' 10.502" N	38471986	2805177
CK11Y	113° 43' 19.097" E	25° 21' 0.763" N	38472013	2804878
CK12Y	113° 43' 12.565" E	25° 20' 55.516" N	38471830	2804717
CK13Y	113° 43' 3.532" E	25° 20' 48.669" N	38471576	2804506
CK14Y	113° 42' 54.050" E	25° 20' 46.033" N	38471311	2804426
CK15Y	113° 42' 41.111" E	25° 20' 52.439" N	38470950	2804624
CK16Y	113° 42' 39.624" E	25° 20' 54.777" N	38470908	2804696
CK17Y	113° 42' 33.367" E	25° 21' 0.065" N	38470734	2804859
CK18Y	113° 42' 26.994" E	25° 21' 12.247" N	38470556	2805234

**表3 扶溪镇大坑饮用水源地保护区拐点坐标**

拐点编号	经度	纬度	X	Y
FX01Y	113° 49' 48.271" E	25° 12' 47.422" N	38482875	2789679
FX02Y	113° 49' 43.095" E	25° 12' 47.107" N	38482730	2789669
FX03Y	113° 49' 40.585" E	25° 12' 45.080" N	38482660	2789607
FX04Y	113° 49' 27.260" E	25° 12' 47.596" N	38482287	2789685
FX05Y	113° 49' 23.938" E	25° 12' 51.580" N	38482194	2789807
FX06Y	113° 49' 1.925" E	25° 12' 55.455" N	38481578	2789927
FX07Y	113° 48' 57.695" E	25° 12' 49.607" N	38481460	2789748

FX08Y	113° 48' 50.964" E	25° 12' 37.630" N	38481271	2789379
FX09Y	113° 49' 1.053" E	25° 12' 28.621" N	38481553	2789102
FX10Y	113° 49' 0.551" E	25° 12' 24.830" N	38481539	2788985
FX11Y	113° 49' 5.823" E	25° 12' 13.385" N	38481686	2788633
FX12Y	113° 49' 8.084" E	25° 12' 7.219" N	38481749	2788443
FX13Y	113° 49' 23.011" E	25° 12' 23.799" N	38482167	2788953
FX14Y	113° 49' 36.452" E	25° 12' 29.076" N	38482544	2789114
FX15Y	113° 49' 39.967" E	25° 12' 28.849" N	38482642	2789107
FX16Y	113° 49' 46.745" E	25° 12' 30.980" N	38482832	2789173
FX17Y	113° 49' 47.904" E	25° 12' 37.375" N	38482865	2789369
FX18Y	113° 49' 49.024" E	25° 12' 41.062" N	38482896	2789483

表4 闻韶镇下徐饮用水源地保护区拐点坐标

拐点编号	经度	纬度	X	Y
WS01Y	113° 55' 0.709" E	25° 9' 55.230" N	38491619	2784372
WS02Y	113° 54' 59.979" E	25° 9' 57.430" N	38491598	2784440
WS03Y	113° 55' 11.332" E	25° 10' 3.314" N	38491916	2784621
WS04Y	113° 55' 13.696" E	25° 10' 7.453" N	38491983	2784748
WS05Y	113° 55' 12.614" E	25° 10' 10.477" N	38491952	2784841
WS06Y	113° 55' 19.605" E	25° 10' 13.396" N	38492148	2784931
WS07Y	113° 55' 26.249" E	25° 10' 20.837" N	38492334	2785160
WS08Y	113° 55' 29.435" E	25° 10' 23.341" N	38492424	2785237
WS09Y	113° 55' 30.941" E	25° 10' 23.673" N	38492466	2785247
WS10Y	113° 55' 36.516" E	25° 10' 19.894" N	38492622	2785131
WS11Y	113° 55' 48.303" E	25° 10' 12.872" N	38492952	2784914
WS12Y	113° 55' 52.002" E	25° 10' 8.076" N	38493055	2784767
WS13Y	113° 55' 52.996" E	25° 10' 6.125" N	38493083	2784707
WS14Y	113° 55' 53.672" E	25° 10' 4.482" N	38493102	2784656
WS15Y	113° 55' 50.253" E	25° 9' 59.903" N	38493006	2784515
WS16Y	113° 55' 45.927" E	25° 9' 56.669" N	38492885	2784416
WS17Y	113° 55' 40.362" E	25° 9' 54.003" N	38492729	2784334
WS18Y	113° 55' 33.278" E	25° 9' 51.793" N	38492531	2784266
WS19Y	113° 55' 27.272" E	25° 9' 50.412" N	38492362	2784224
WS20Y	113° 55' 17.541" E	25° 9' 50.584" N	38492090	2784229

WS21Y	113° 55' 8.462" E	25° 9' 47.598" N	38491836	2784137
WS22Y	113° 55' 4.890" E	25° 9' 47.073" N	38491736	2784121
WS23Y	113° 55' 1.865" E	25° 9' 51.816" N	38491651	2784267

表5 仁化县红山镇月王坑饮用水源地保护区拐点坐标

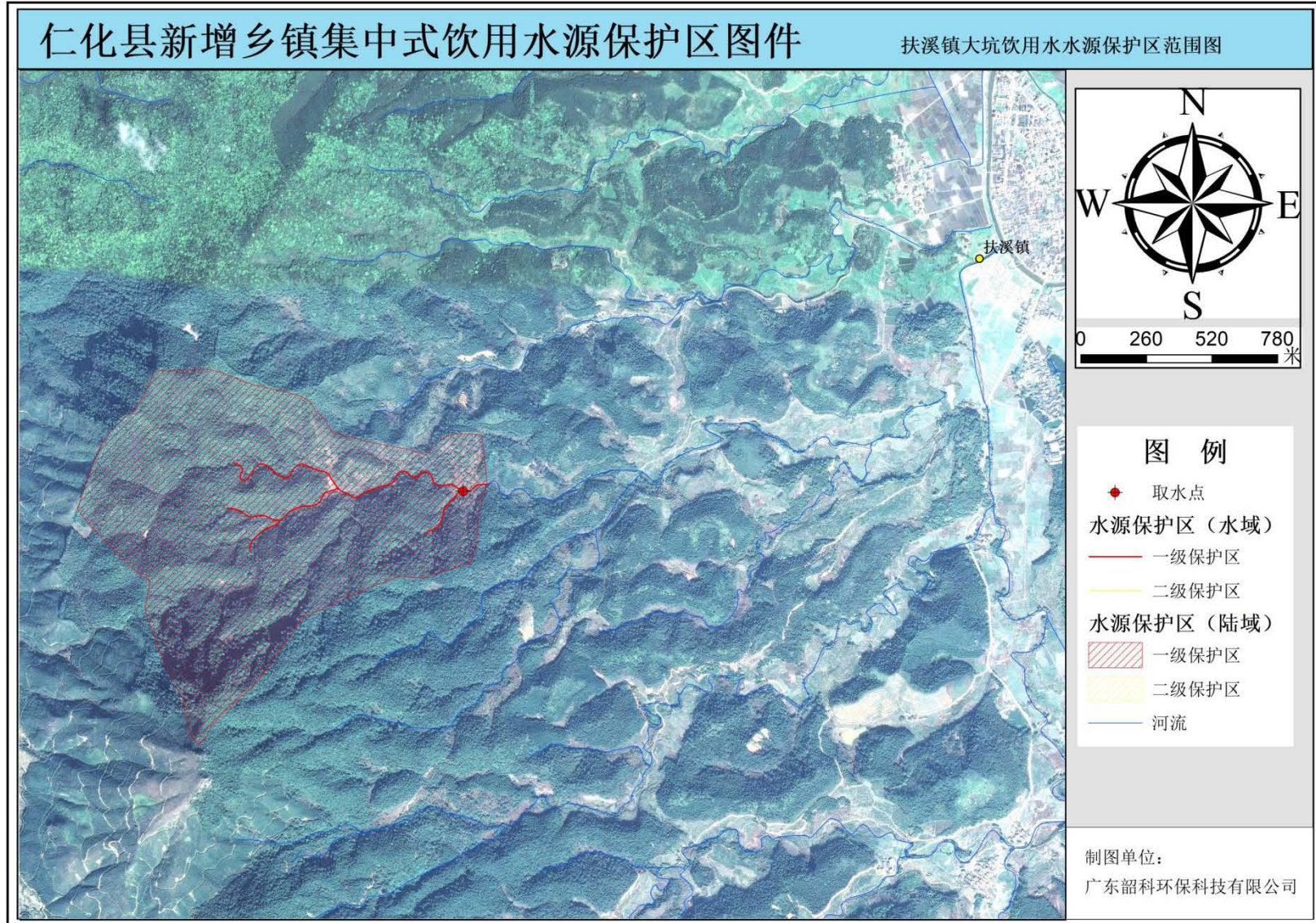
拐点编号	经度	纬度	X	Y
HSY01Y	113° 36' 9.729" E	25° 15' 43.946" N	38459978	2795159
HSY02Y	113° 36' 12.681" E	25° 15' 43.472" N	38460060	2795144
HSY03Y	113° 36' 19.504" E	25° 15' 50.610" N	38460252	2795363
HSY04Y	113° 36' 28.352" E	25° 15' 58.203" N	38460500	2795596
HSY05Y	113° 36' 31.712" E	25° 15' 57.223" N	38460594	2795566
HSY06Y	113° 36' 33.123" E	25° 15' 59.549" N	38460634	2795637
HSY07Y	113° 36' 39.645" E	25° 16' 5.907" N	38460817	2795832
HSY08Y	113° 36' 45.151" E	25° 16' 6.738" N	38460971	2795857
HSY09Y	113° 36' 57.244" E	25° 16' 9.887" N	38461309	2795953
HSY10Y	113° 36' 58.942" E	25° 16' 3.735" N	38461356	2795764
HSY11Y	113° 36' 52.937" E	25° 15' 53.466" N	38461188	2795448
HSY12Y	113° 36' 47.756" E	25° 15' 47.261" N	38461042	2795258
HSY13Y	113° 36' 36.074" E	25° 15' 38.803" N	38460714	2794998
HSY14Y	113° 36' 23.784" E	25° 15' 36.333" N	38460370	2794923
HSY15Y	113° 36' 14.017" E	25° 15' 30.503" N	38460096	2794745
HSY16Y	113° 36' 11.827" E	25° 15' 32.603" N	38460035	2794810
HSY17Y	113° 36' 8.700" E	25° 15' 41.785" N	38459949	2795092

表6 仁化县红山镇石空子饮用水源地保护区拐点坐标

拐点编号	经度	纬度	X	Y
HSS01Y	113° 35' 20.885" E	25° 15' 43.482" N	38458611	2795149
HSS02Y	113° 35' 16.944" E	25° 15' 33.613" N	38458500	2794845
HSS03Y	113° 34' 53.911" E	25° 15' 22.801" N	38457854	2794515
HSS04Y	113° 34' 45.967" E	25° 15' 23.294" N	38457632	2794530
HSS05Y	113° 34' 32.468" E	25° 15' 17.065" N	38457253	2794340
HSS06Y	113° 34' 24.346" E	25° 15' 14.376" N	38457026	2794258
HSS07Y	113° 34' 12.512" E	25° 15' 18.899" N	38456695	2794398

HSS08Y	113° 34' 8.328" E	25° 15' 25.679" N	38456579	2794607
HSS09Y	113° 34' 13.411" E	25° 15' 31.971" N	38456722	2794800
HSS10Y	113° 34' 21.347" E	25° 15' 33.971" N	38456944	2794861
HSS11Y	113° 34' 28.908" E	25° 15' 34.767" N	38457156	2794885
HSS12Y	113° 34' 40.891" E	25° 15' 42.024" N	38457492	2795107
HSS13Y	113° 34' 48.631" E	25° 15' 45.578" N	38457708	2795216
HSS14Y	113° 34' 51.546" E	25° 15' 50.566" N	38457791	2795369
HSS15Y	113° 35' 14.591" E	25° 15' 58.628" N	38458436	2795615
HSS16Y	113° 35' 20.648" E	25° 15' 56.925" N	38458605	2795562
HSS17Y	113° 35' 19.999" E	25° 15' 52.968" N	38458587	2795441

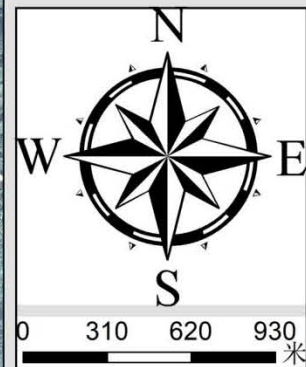
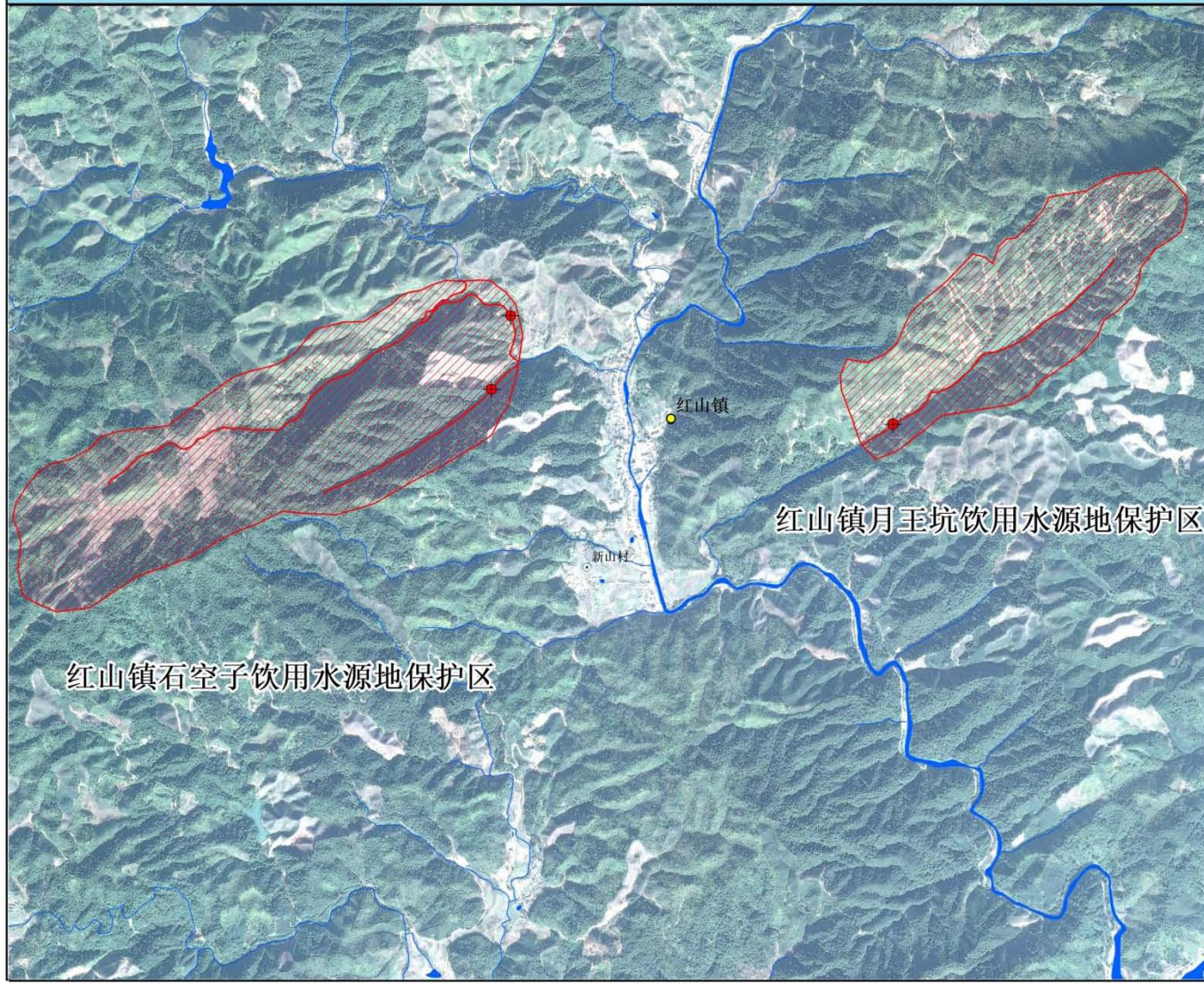
附图1 仁化县新增乡镇集中式饮用水水源保护区范围图（征求意见稿）





# 仁化县新增乡镇集中式饮用水源地保护区图件

红山镇石空子/月王坑饮用水源地保护区范围图



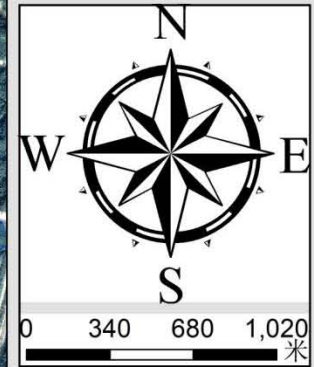
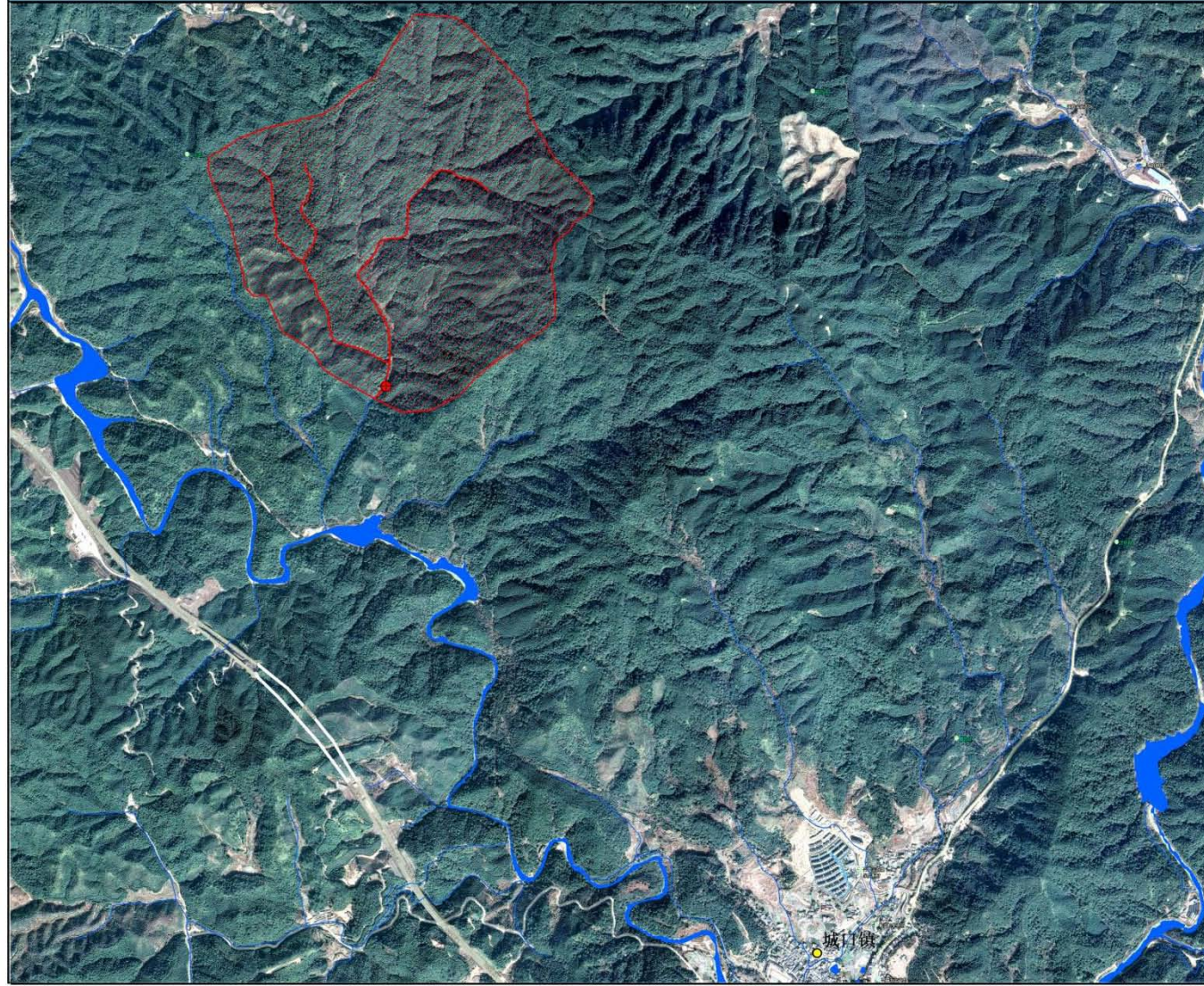
## 图例

- ◆ 取水点
- 水源保护区（水源）
  - 一级保护区
  - 二级保护区
- 水源保护区（陆域）
  - ▨ 一级保护区
  - ▨ 二级保护区
- 河流

制图单位：  
广东韶科环保科技有限公司

# 仁化县新增乡镇集中式饮用水源保护区图件

城口镇青石坑饮用水源地保护区范围图



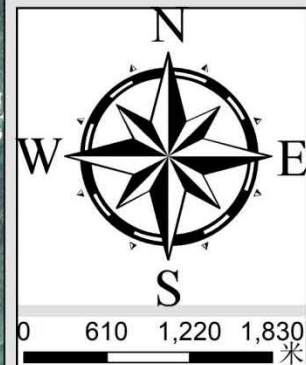
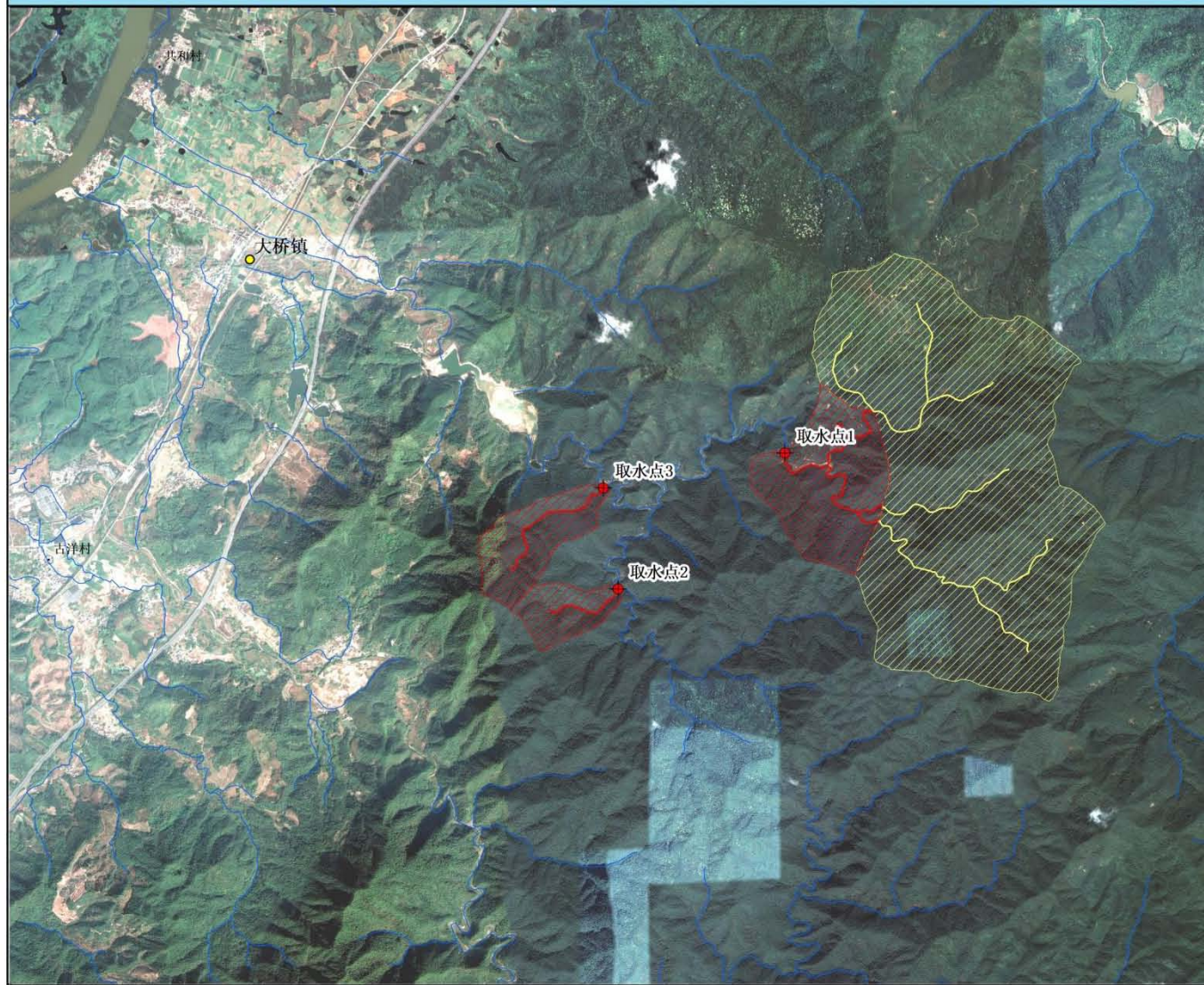
## 图例

- 取水点
- 水源保护区（水源）
  - 一级保护区
  - 二级保护区
- 水源保护区（陆域）
  - 一级保护区
  - 二级保护区
- 河流

制图单位：  
广东韶科环保科技有限公司

# 仁化县新增乡镇集中式饮用水水源保护区图件

大桥镇干坑山饮用水水源保护区范围图



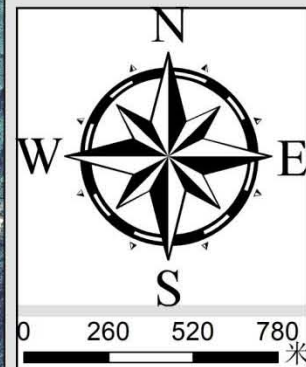
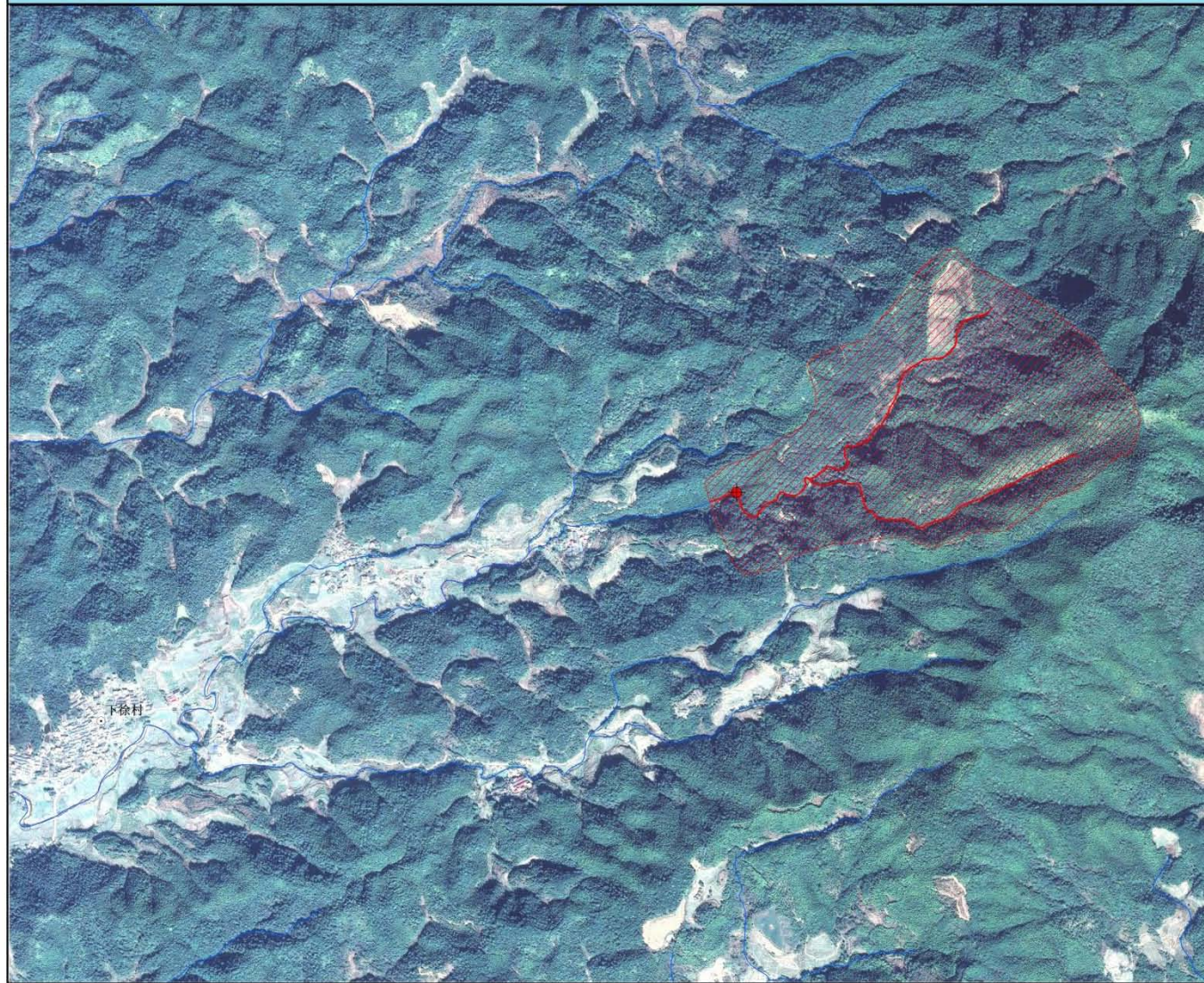
## 图例

- 取水点
- 水源保护区（水域）
  - 一级保护区
  - 二级保护区
- 水源保护区（陆域）
  - 一级保护区
  - 二级保护区
- 河流

制图单位：  
广东韶科环保科技有限公司

# 仁化县新增乡镇集中式饮用水水源保护区图件

闻韶镇下徐饮用水水源保护区范围图



## 图例

- 取水点
- 水源保护区（水域）
  - 一级保护区
  - 二级保护区
- 水源保护区（陆域）
  - 一级保护区
  - 二级保护区
- 河流

制图单位：  
广东韶科环保科技有限公司